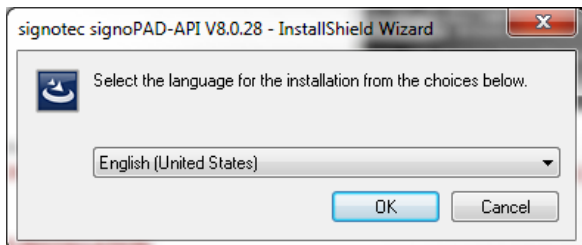
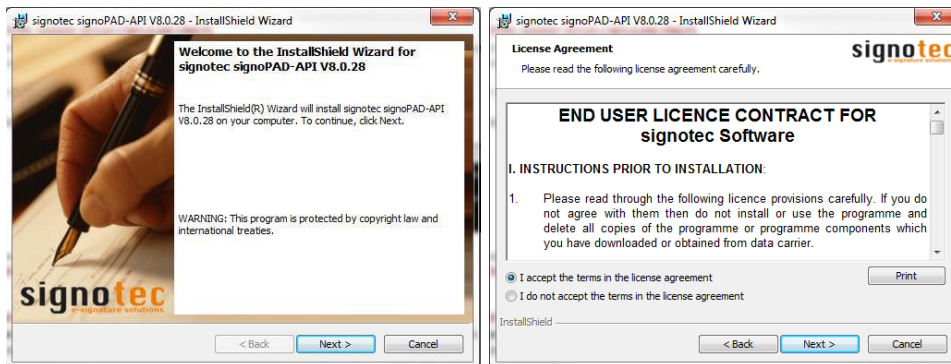


INSTALLATION: AMBIR SP110-NG

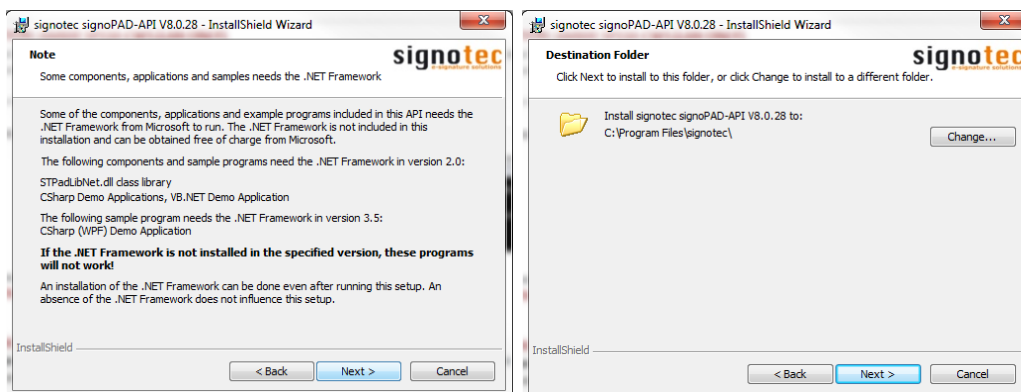
1. Remote users should download the Virtual Serial port driver on the local computer first. (http://www.ambir.com/FTP/CDM20814_Setup.exe)
2. Then install the Signopad software on both the local computer and when logged into the Terminal Server.
3. Run the API software (http://www.ambir.com/FTP/signoPAD-API_8.0.28.exe) to install **SignoPad** software. In the **IntallSheild Wizard**, choose **English (United States)** and click **OK**



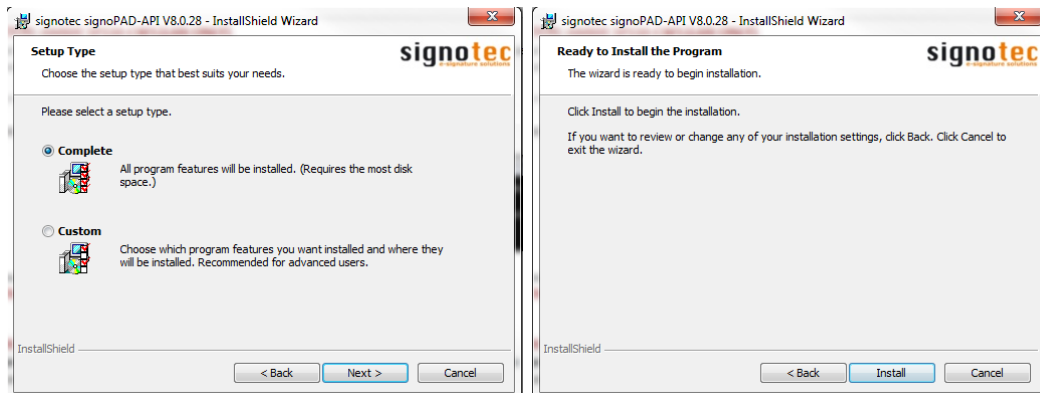
4. At the Welcome window, click **Next**, accept the **License Agreement** and click **Next**.



5. In the Note window, click **Next**. In the **Destination Folder** window, click **Next**.



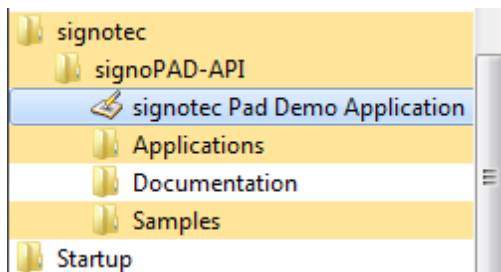
6. In the **Setup Type** window, choose **Complete** and click **Next**. In the **Ready to Install...** window, click **Install**.



7. The software will install. When finished, click **Finish**.



8. To test the pad with the **Signopad** software, launch the **signotec Pad Demo Application** from the Start Menu.



9. Search for serial Devices, Get Devices, then Open Device.



You are now ready to proceed